

# ***ARK Systems EDI Link Procedure Manual***

Electronic Data Interchange (EDI) is a standard protocol to transfer business and accounting information electronically rather than on paper forms. Several types of business transactions can be transmitted via EDI including Invoices, Purchase orders, transaction acknowledgments, etc. ***ARK Systems EDI Link*** now supports the two main transaction types needed by freight forwarders and trucking companies: Invoicing (Type 210) and Shipment Status Messages (Type 214).

Typically, both the sender and receiver of information uses a third party to store and forward their messages. This is called a Value Added Network or VAN. They are similar to an Internet Service Provider (ISP), but specialize in EDI transactions. A fee is paid to the VAN to setup your mailbox and a small transaction fee is charged each time files are transmitted or received.

The process of creating and sending EDI information is simple. Using ***ARK Systems EDI Link***, enter the EDI customer you need to update and a date range of invoices or shipment PODs. The system will then create a standardized EDI file that is sent via modem to your VAN. Later, your customer will download this data from their VAN and integrate it into their accounting system.

## **USING THE PROGRAM**

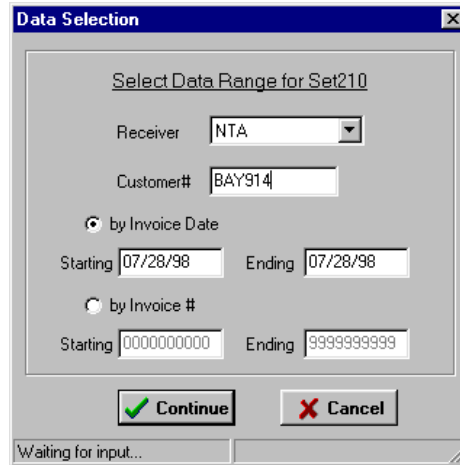
### Menu Selections:

- File
  - Exit
- Forms
  - Set 210 (Invoice Processing)
  - Set 214 (Shipment Status)
- Setup
  - EDI Control
  - QID Table
- Help
  - About

## FORMS

### Set 210 and 214

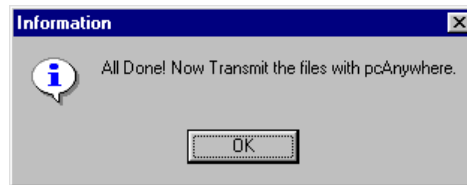
Both Transaction Sets 210 and 214 will give you data range selection screen for the specified customer as shown:



The 'Data Selection' dialog box is titled 'Data Selection' and contains the following elements:

- Text: 'Select Data Range for Set210'
- Receiver: A dropdown menu with 'NTA' selected.
- Customer#: A text box containing 'BAY914'.
- Radio buttons for selection:
  - by Invoice Date
  - by Invoice #
- Starting and Ending date fields for 'by Invoice Date': Both contain '07/28/98'.
- Starting and Ending number fields for 'by Invoice #': Starting contains '0000000000' and Ending contains '9999999999'.
- Buttons: 'Continue' (with a green checkmark) and 'Cancel' (with a red X).
- Status bar: 'Waiting for input...'

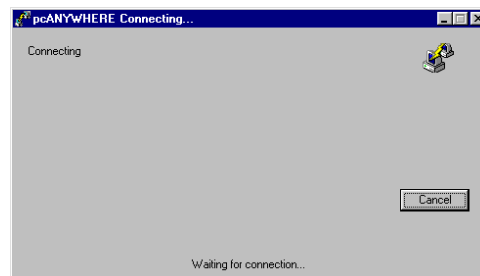
This will allow you to choose a Receiver (VAN), Customer #, and date range or Waybill number range. Click the continue button to continue the process. Once the data has been gathered,, you will see the next screen.



The 'Information' dialog box is titled 'Information' and contains the following elements:

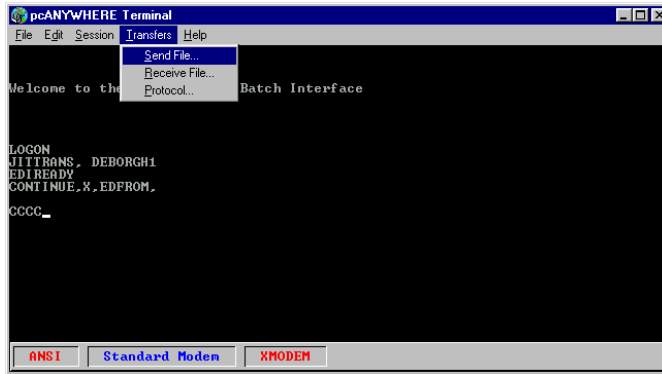
- Information icon (i in a circle).
- Text: 'All Done! Now Transmit the files with pcAnywhere.'
- Button: 'OK'.

Click the OK button and it will auto dial the provider using pcAnyWhere terminal emulation.

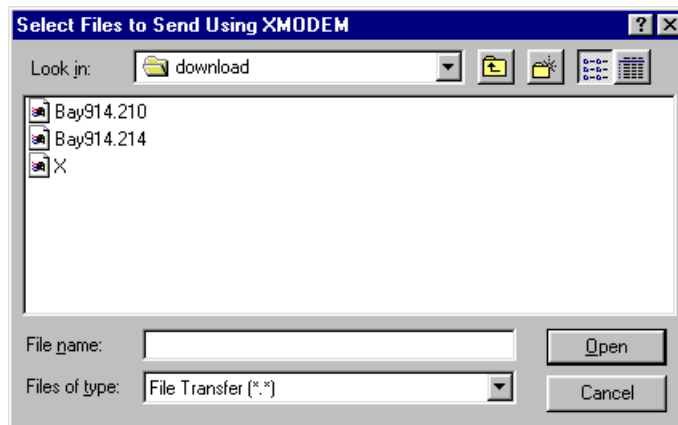


The 'pcANYWHERE Connecting...' dialog box is titled 'pcANYWHERE Connecting...' and contains the following elements:

- Text: 'Connecting'.
- Icon: A small icon of a computer mouse.
- Button: 'Cancel'.
- Status bar: 'Waiting for connection...'

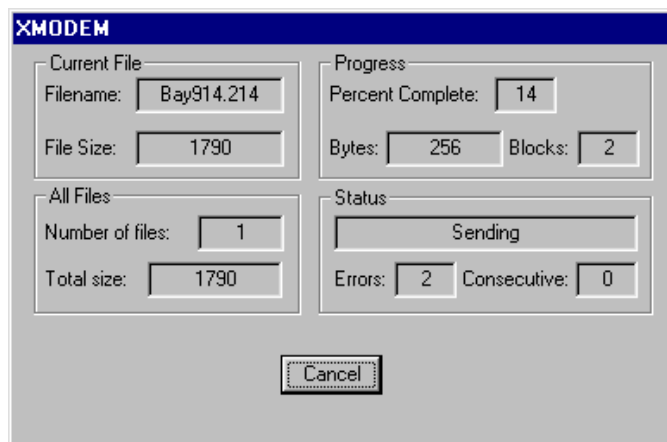


Then the logon script will run. After the terminal screen shows “CONTINUE” ,”X,”EDFROM”, click the Transfer menu option and select Send File.



Choose the file you want to send and click Open.

The next screen will show you the file transfer progress. When done, click the OK.



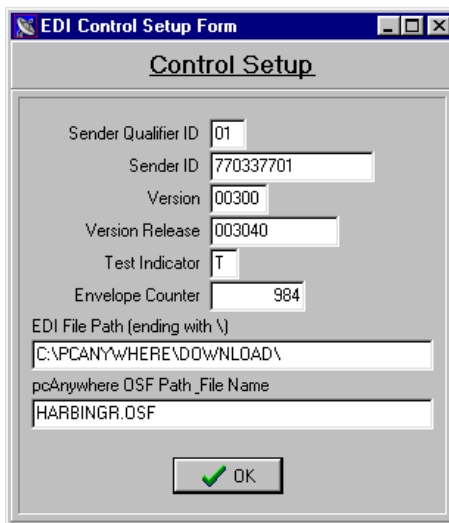
Wait until you see “SAVED” and “EDIREADY” come up on terminal screen and then type LOGOFF. You have completed the EDI file transfer.

## SETUP

Setup control has 2 selections; EDI Control and QID (Qualifier ID) Table. These give you all the settings you need to create the transfer file and to connect to the provider.

### EDI Control Setup Form

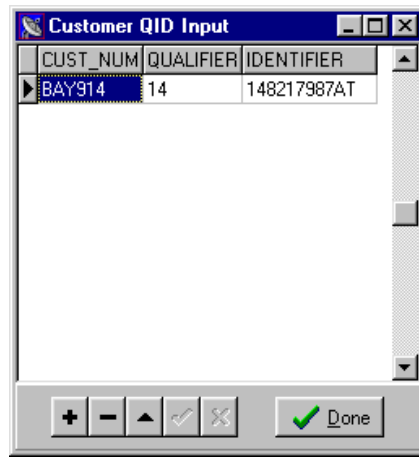
Your provider (VAN) provides a sender Qualifier ID, Sender ID, Version and Version Release number. The Test Indicator is a flag for testing purpose. “T” for Testing and “P” for production cycle. Envelope Counter is a counter to distinguish each transfer file. EDI File Path is the location of your transfer file(s).



The screenshot shows a Windows-style dialog box titled "EDI Control Setup Form". Inside the dialog, the title "Control Setup" is centered. Below the title, there are several input fields with labels to their left: "Sender Qualifier ID" with the value "01", "Sender ID" with "770337701", "Version" with "00300", "Version Release" with "003040", "Test Indicator" with "T", and "Envelope Counter" with "984". Below these fields are two text boxes: "EDI File Path (ending with \)" containing "C:\PCANYWHERE\DOWNLOAD\" and "pcAnywhere OSF Path\_File Name" containing "HARBINGR.OSF". At the bottom center of the dialog is an "OK" button with a green checkmark icon to its left.

PcAnywhere OSF Path\_File Name is the location of your communication protocol file. This is usually the pcAnywhere Data directory or the AIRBILL directory.

## QID Table



The screenshot shows a window titled "Customer QID Input" with a table containing one row of data. The table has three columns: CUST\_NUM, QUALIFIER, and IDENTIFIER. The first row contains the values BAY914, 14, and 148217987AT. Below the table is a navigator bar with buttons for adding (+), deleting (-), and navigating (up and down arrows), along with a "Done" button.

CUST_NUM	QUALIFIER	IDENTIFIER
BAY914	14	148217987AT

This table will supply the customer's Qualifier ID and Identifier. You will need to get this information from your customers or their VAN. To add another record, click the plus (+) button on the navigator bar. To delete a customer VAN, click the minus (-) bar.

## Help

About – This function simply tells what version you are running and information about your system. You may need to give this information to support if a problem arises.